

521174

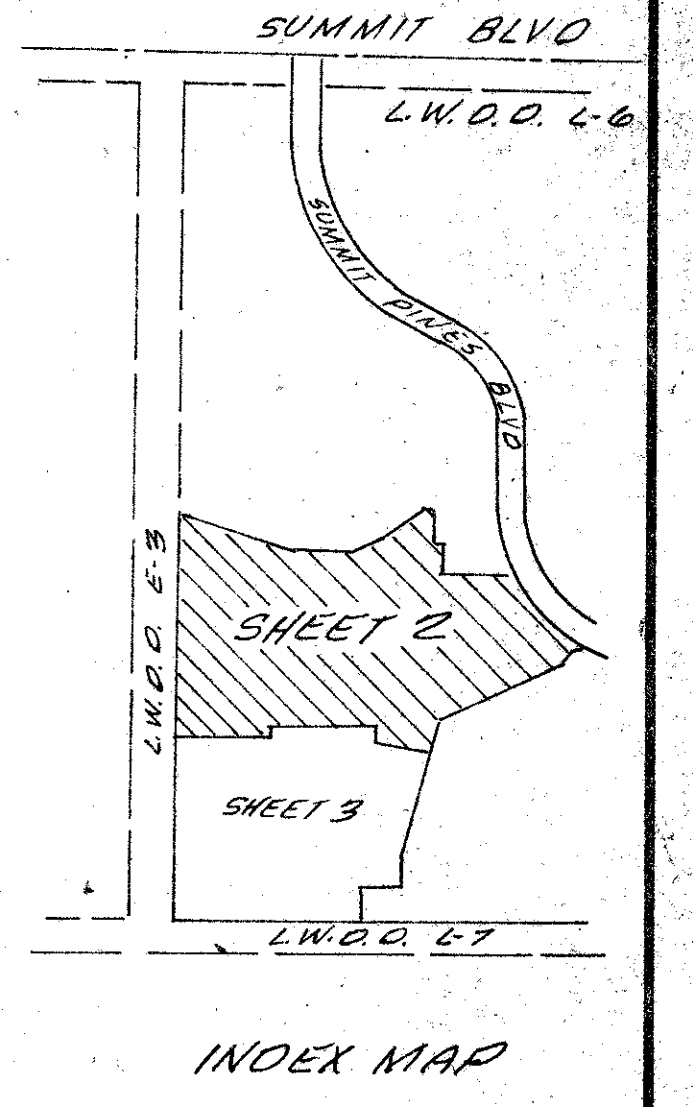
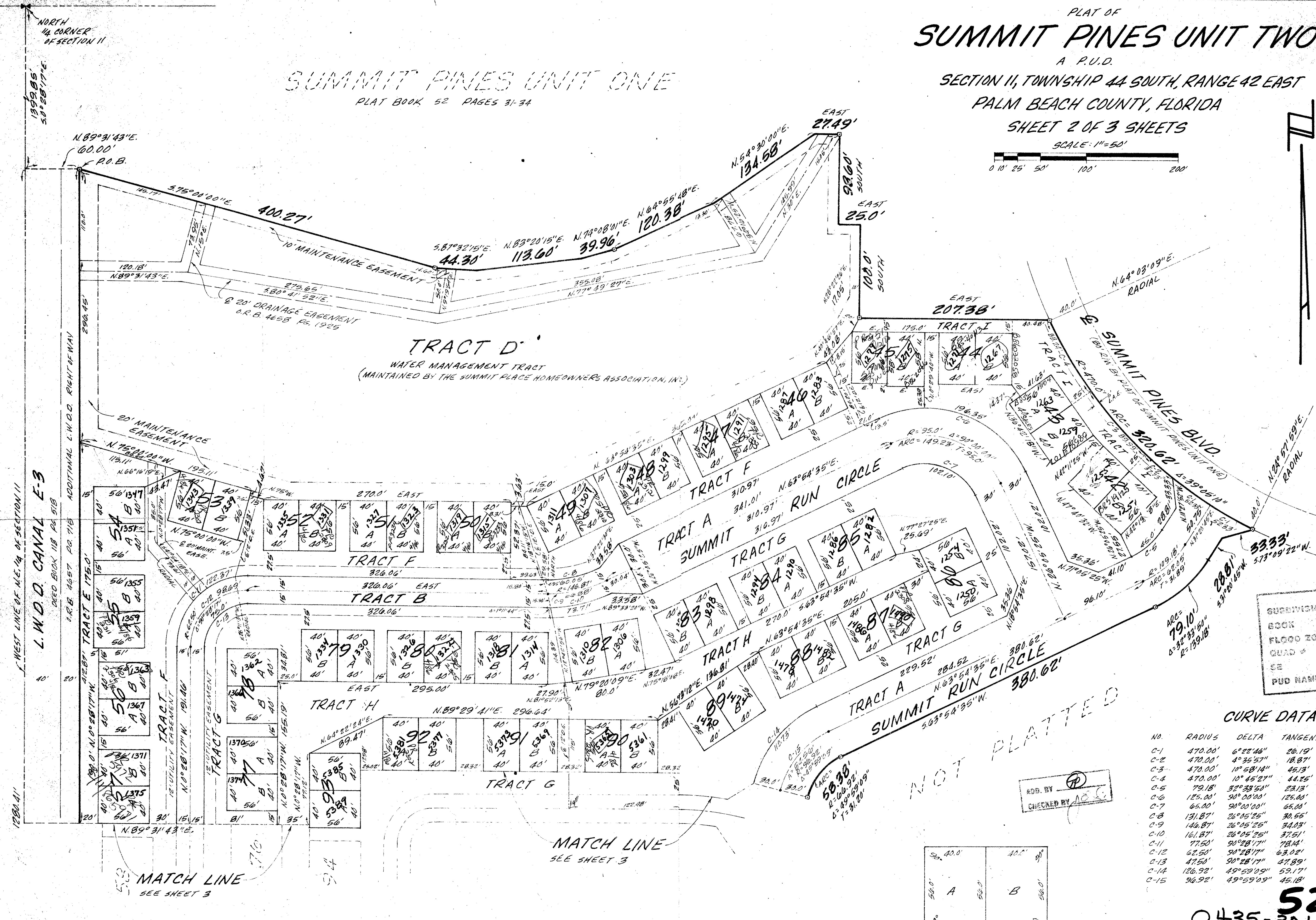
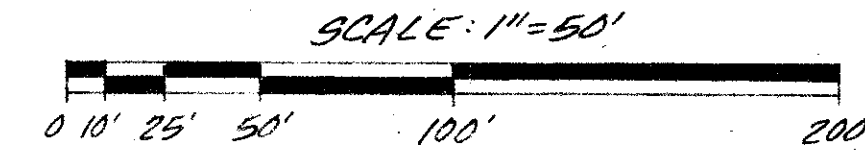
174

PLAT OF SUMMIT PINES UNIT TWO

A P.U.D.
SECTION 11, TOWNSHIP 44 SOUTH, RANGE 42 EAST
PALM BEACH COUNTY, FLORIDA
SHEET 2 OF 3 SHEETS

SUMMIT PINES UNIT ONE

PLAT BOOK 52 PAGES 31-34

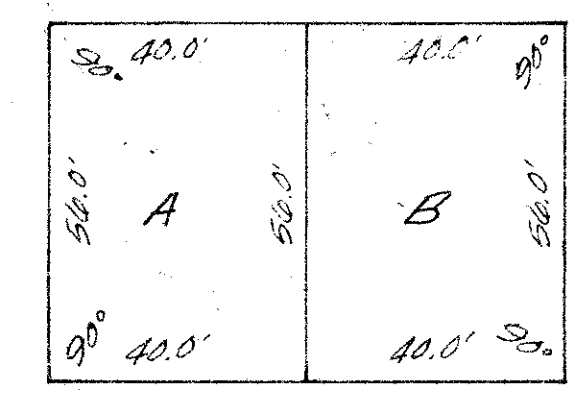


SUBDIVISION Summit Pines
BOOK 52 PAGE 174
FLOOD ZONE B FLOOD MAP # 1C5B
QUAD # 32 PLAT # RS
PUD NAME Unit 2

CURVE DATA

NO.	RADIUS	DELTA	TANGENT	ARC LENGTH
C-1	470.00'	6°22'46"	20.19'	52.33'
C-2	470.00'	4°35'57"	18.87'	37.73'
C-3	470.00'	10°58'14"	45.13'	89.99'
C-4	470.00'	10°45'21"	44.25'	88.24'
C-5	79.18'	32°23'50"	23.13'	45.00'
C-6	125.00'	30°00'00"	125.00'	196.35'
C-7	65.00'	90°00'00"	65.00'	102.10'
C-8	131.87'	26°05'25"	30.55'	60.05'
C-9	146.87'	26°05'25"	34.03'	66.88'
C-10	161.87'	26°05'25"	37.51'	73.71'
C-11	77.50'	90°28'17"	78.14'	122.37'
C-12	62.50'	90°28'17"	63.02'	98.69'
C-13	47.50'	90°28'17"	47.89'	75.00'
C-14	126.92'	49°59'09"	59.17'	110.73'
C-15	94.92'	49°59'09"	45.18'	84.56'

NOT PLATTED



TYPICAL LOT DETAIL
SCALE: 1"=30'

NOTE: "D.E." = DRAINAGE EASEMENT
"L.A.E." = LIMITED ACCESS EASEMENT
ALL LOT TIES ARE 90° OFF REFERENCE LINES UNLESS SHOWN OTHERWISE. ALL LOT TIES TO CURVES ARE RADIAL LINES UNLESS SHOWN OTHERWISE.

0435-301
SUMMIT PINES UNIT 2
O'BRIEN, SUITER & O'BRIEN, INC.
ENGINEERS, SURVEYORS, LAND PLANNERS
2601 NORTH FEDERAL HIGHWAY, DELRAY BEACH, FLORIDA

DATE: JULY 1985
FIELD BOOK: PAGE: SHEET 2 OF 3
SCALE: 1"=50'
ORDER NO: 84-7

DRAWING NUMBER

DRAWING NUMBER

DRAWING NUMBER

PLAN HOLD CORPORATION • IRVINE, CALIFORNIA
RECORD BY NUMBER 07548